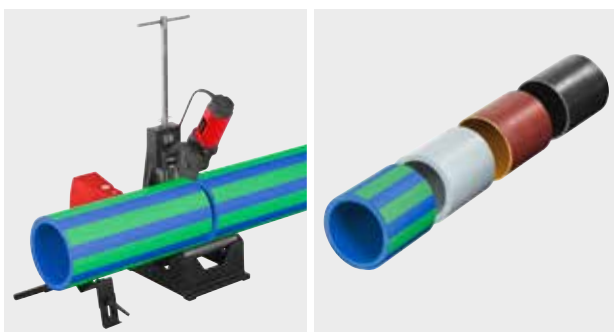


ROLLER'S *Disc 225*

Patent DP
10 2005 053 179



German Top Quality



Compact, mobile pipe cutting machine for fast, right-angled cutting of pipes of the press fitting systems made of stainless steel, copper, carbon steel, Ø 54–225 mm, steel pipes EN 10255 (DIN 2440) DN 50–150 mm, Ø 2–6", cast iron pipes (SML) EN 877 DIN 19522 DN 50–200, plastic pipes SDR 11, wall thickness $s \leq 21$ mm, Ø 40–225 mm, composite tubes Ø 40–110 mm.

- Universal for cutting many types of pipes.
 - For right-angled cutting**, according to requirements.
 - For chipless cutting**, no chips in the pipe system, no dust.
 - For welding-compatible cutting**, for butt welding.
 - For fast cutting**, without impairment of the pipe material by overheating.
 - For cutting without outside burr**, easy insertion into connecting muffs.
 - For dry cutting**, without impairment by coolant lubricants.
- Strong, torsion-free cast structure for right angled cutting. Easy cutting of the pipes by specially designed cutter wheel. Driven cutting wheel and straight feed for fast cutting (Patent DP 10 2005 053 179). Effortless feeding by easy-grip, proven feed lever and trapezoidal screw spindle on needle bearing. Cutting wheel protected against touching the running rollers by in-feed limitation.
- 4 strong hardened precision tubular steel running rollers on ball bearings for low-friction turning of the pipes to be cut, trapezoidally arranged, replaceable.
- Easy to operate, no setting work in the working range Ø 100–225 mm, Ø 4–6". Roller insert for cutting pipes Ø 40–100 mm, Ø 1½–3½" (accessory).
- Optimally set cutting speed (115 rpm) for fast, quiet cutting.
- Compact, easily transportable, only 37 kg. With practical chassis with two rubber tyred wheels for easy transport.
- Proven, powerful 1~ universal motor 230 V, 50 – 60 Hz, 1,200 W, with safety foot switch.
- Special cutting wheels with respective different cutting geometry are adapted to the performance data of ROLLER'S Disc 225 and to the materials to be cut and ensure fast cutting without outside burr. All cutting wheels made from proven, tenacious special steel for extremely long life.
- Height adjustable pipe rests for pipes Ø 40–100 mm, Ø 1½–3½" and for pipes Ø 100–225 mm, Ø 4–6". For easy moving of the material in all directions by four stainless steel balls in a corrosion-protected housing. Safe guiding of long pipes by use of several pipe rests.

Scope of Delivery

Art.-No.

ROLLER'S *Disc 225 Basic*

Drive unit with rollers on hardened precision steel tube, safety foot switch, ring spanner, without cutting wheel. 2 height adjustable pipe rests Ø 100–225 mm, Ø 4–6"

845004

Accessories

ROLLER'S cutting wheel Cu/INOX

for pipes of the pressfitting systems of stainless steel, copper, C-steel

845050

ROLLER'S cutting wheel Cu

specially for pipes of the pressfitting systems of copper

845053

ROLLER'S cutting wheel St

for steel pipes, cast pipes (SML)

845052

ROLLER'S cutting wheel V, s 10

for plastic and composite tubes, wall thickness $s \leq 10$ mm

845051

ROLLER'S cutting wheel P, s 21

for plastic and composite tubes, wall thickness $s \leq 21$ mm

845057

ROLLER'S cutting wheel C-SF especially for pipes

of the pressfitting systems/push fitting systems of carbon steel, simultaneously produces a chamfer.

845055

Roller insert

for cutting pipes Ø 40–100 mm, Ø 1½–3½"

845060

Pipe rest Ø 100–225 mm

height adjustable for pipes Ø 100–225 mm, Ø 4–6"

845220

Pipe rest Ø 40–100 mm

height adjustable, for pipes Ø 40–100 mm, Ø 1½–3½"

845230

