

ROLLER'S E-Control 2



Powerful, compact electric pressure testing pump with test and pressure range up to 60 bar / 6 MPa / 870 psi.

- For effortless, fast pressure and leak testing of pipe systems in sanitary, heating and sprinkler installation, in compressed air, steam and cooling systems, oil installations, in boiler and pressurised vessel construction. Especially of large plants.
- Robust, compact, light, only 12 kg.
- High-performance piston pump, self-priming with low-wear pressure piston of stainless steel, for high transport capacity (6.5 l/min) and long life.
- Pressure limiting in 6 stages adjustable to the necessary pressure in the pipe system/vessel (10–60 bar / 1–6 MPa / 145–870 psi).
- Pressure and leak test with water, aqueous solutions and emulsions. For liquids with a pH value of 7–10, a temperature up to 60°C and viscosity of ≤ 1.5 mPa s.
- Suction hose with filter for sucking from vessels or for connection to a hose valve. A return flow stop in the suction hose prevents the suction hose from running empty at standstill; therefore shorter suction times.
- Proven, powerful 1~ condenser motor 230 V, 50 Hz, 1,300 W.
- Damped, glycerine-filled pressure gauge 60 bar/6 MPa/870 psi, high pressure hose with fabric inlay reduces measuring errors.
- Connection piece with pressure gauge 60 bar / 870 psi and shutoff valve (accessory) for the pressure test, also after removing the pressure testing pump. For using for several test points and for theft protection.
- Fine scale pressure gauge up to 16 bar/1.6 MPa / 232 psi (accessory) for reading a pressure change of 0.1 bar / 0.01 MPa / 1.45 psi, for leak testing according to DIN 1988.



| Scope of Delivery | Art.-No. |
|---|----------|
| ROLLER'S E-Control 2 Electric pressure testing pump with adjustable pressure limiting, pressure gauge up to 60 bar / 6 MPa / 870 psi, 1.5 m suction hose with filter and 1/2" connection, return flow stop, 1.5 m high pressure hose with 1/2" connection | 115500 |

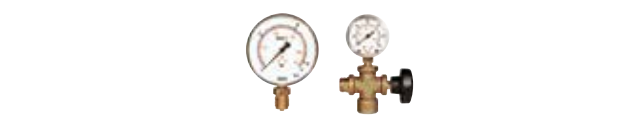
| Accessories | |
|---|--------|
| Fine scale pressure gauge up to 16 bar / 1.6 MPa / 232 psi | 115045 |
| Connection piece with pressure gauge up to 60 bar / 6 MPa / 870 psi and shut-off valve | 115110 |

ROLLER'S Control



Powerful, robust, reliable manual pressure testing pump with test and pressure range up to 60 bar / 6 MPa / 870 psi.

- For exact, fast pressure and leak testing of pipe systems in sanitary, heating and sprinkler installation, in compressed air, steam and cooling systems, oil installations, in boiler and pressurised vessel construction.
- Corrosion-resistant, powder-coated sheet steel tank for 12 l. For long life.
- Low-wear, rigid brass pressure piston.
- Pressure and leak testing with water, oil or glycol. For liquids with a pH-value of 7–12, a temperature up to 60°C and viscosity ≤ 1.5 mPa s.
- Stable operating lever with ergonomic handle, lockable as a carrying handle.
- Dual valve system with stainless steel balls for reliable build-up of pressure.
- High pressure hose with fabric inlay reduces measuring errors.
- Fine scale pressure gauge up to 16 bar/1.6 MPa / 232 psi (accessory) for reading a pressure change of 0.1 bar / 0.01 MPa / 1.45 psi, for leak testing according to DIN 1988.



| Scope of Delivery | Art.-No. |
|--|----------|
| ROLLER'S Control Manual pressure testing pump with pressure gauge up to 60 bar/6 MPa / 870 psi, 1.5 m suction hose with filter and 1/2" connection | 115000 |

| Accessories | |
|---|--------|
| Fine scale pressure gauge up to 16 bar / 1.6 MPa / 232 psi | 115045 |
| Connection piece with pressure gauge up to 60 bar / 6 MPa / 870 psi and shut-off valve | 115110 |